

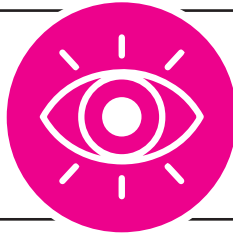


Circles

A COMMUNITY OF SUPPORT AND EMPOWERMENT!

Circles is a diverse network of professionals who support the mission of the Women's Fund to improve the lives of all women, girls and anyone facing gender-based oppression in our community while creating a space where members can build authentic relationships with one another.

Circles has a shared Vision with the Women's Fund of Omaha: A community where all women and girls* have the opportunity to reach their full potential.



Circles Mission Statement:
Circles is a diverse network of leaders (women, femmes and gender-expansive individuals) who support the mission of the Women's Fund. Through Circles, members cultivate authentic relationships and leverage a community that supports and empowers each other.

Circles Inclusion Statement:
Women's Fund Circles is intentional about creating a community that builds bold and affirming spaces to create authentic relationships and develop leadership for individuals that face gender-based oppression (this includes cis and trans women as well as nonbinary people who are comfortable in a space that centers the experiences of women).



Circles members serve a two-year term, with an optional third year. Each class is between 30-40 members. There are more than 200 alumni in the Omaha community.

* Women and girls includes anyone who identifies as a woman or girl. Our work, including funding and advocacy efforts, is inclusive of all individuals, including transgender and gender expansive people, that experience gender oppression.

EXPECTATIONS

Circles members can expect:

- Leadership opportunities
- Relationships that last well beyond the three years as an active Circles member
- To serve as an ambassador for gender equity in the community
- Mentoring potential and leadership development

ACTIVE MEMBERSHIP

- Donate \$100 per year to the Women's Fund
- Attend 75% of the monthly Circles meetings
- Attend four Women's Fund Circles events per year, outside of the monthly meetings
- Commitment to a Women's Fund project (first year requirement)





WOMEN'S FUND CIRCLES MEMBERSHIP INCLUDE:

- The opportunity to attend Women's Fund events at discounted admission prices
- Online resources, including a members-only Facebook group
- Regular Women's Fund communications
- Invitations to attend trainings and workshops hosted by Women's Fund

LEADERSHIP TEAM

The Leadership Team, comprised of 15 *Circles* members, provides direction and implements the group programs, activities and communication, in coordination with the Women's Fund *Circles* liaison.

Committees:

- Diversity, Equity and Inclusion
- Communications
- Member Engagement
- Programming
- Projects

CIRCLES—DEFINED BY MEMBERS

Leadership Team quotes:

"Circles has helped me expand my social capital. As an Omaha transplant, building a meaningful and strong professional network was so important to me. *Circles* helped me do just that, plus helped me find personal friendships as well." -Marisa Hattab

"Because of *Circles*, I know that I'm a part of a powerful Omaha community of women, femmes and nonbinary folks in a way I hadn't before. It's changed the way I show up in my community—both because of what I've learned about policy and civic engagement and because my small-c-circle doesn't only include my family and friends anymore—it includes this *Circles* community!" -Rachel Vaca-Lubischer

